



Who is FHI?

FHI is a multidisciplinary consulting firm focused on providing quality services and products to our clients. Our staff of planners, engineers and scientists have a depth of experience on projects of many sizes for both public and private clients. Our core services include environmental planning, transportation planning, cultural resource investigations, GIS mapping and analyses, community and site planning, and public involvement. We have applied these services to a broad range of National Environmental Policy Act (NEPA) projects since our inception in 1987.

FHI's NEPA Services

- NEPA Project Management
- Full Spectrum NEPA Analysis
 - Wetlands and Water Resources
 - Ecological Resources, Threatened and Endangered Species
 - Air Quality
 - Noise
 - Traffic, Parking, Bicycle, and Pedestrian Considerations
 - Land Use and Consistency with Other Plans
 - Socioeconomics and Environmental Justice
 - Historic and Archaeological Resources
 - Section 4(f) Resources
 - Section 6(f) Resources
 - Coastal Zone Management
 - Visual Resources
 - Hazardous Materials
 - Construction Impacts
 - Secondary and Cumulative Impacts
- Special Associated Studies
 - Biological Assessments
 - Section 4(f) Evaluations
 - Section 106 Documentation

Core Services

- Transportation Planning
- Environmental Planning
- Historical/Cultural Documentation
- Public Involvement
- Community/Site Planning
- GIS Analysis

NEPA Project Management

FHI has managed numerous NEPA analyses for a wide array of federally funded actions, ranging from large complex infrastructure projects requiring Environmental Impact Statements to small and routine improvements requiring Categorical Exclusions. Our project managers have a comprehensive understanding of NEPA as



an interdisciplinary planning and decision-making process that is founded on a suite of regulations and laws enacted to protect the environment. Our knowledge of the process and regulatory framework, coupled with our extensive project experience, enables our managers to provide efficient, value added service to our clients. From the project scoping phase to the record of decision, we take a proactive approach to identifying and resolving potential issues so that our clients are well informed and so the process can keep moving forward. Our ability to manage complex datasets, accurately document and graphically depict project impacts, engage project stakeholders and the public, and to identify avoidance and mitigation measures, has earned us the reputation as being a full service NEPA consulting firm.

Full Spectrum NEPA Impact Analysis

FHI has the expertise to evaluate the full gamut of NEPA issues. This capability positions us well to serve either as the project lead, as a resource specialist, or as a peer reviewer. We are intimately familiar with the regulatory guidelines and Executive Orders commonly encountered on NEPA projects. Our specific resource capabilities include:

Wetlands and Water Resources – Tidal and inland wetland functional analyses; tidal wetland delineation; floodplain management; surface water, groundwater and storm water management; watershed protection; impact analysis; mitigation planning and design.

Ecological Resources, Threatened and Endangered Species - Natural resource inventories; site analysis; threatened and endangered species surveys and coordination; impact analysis; natural resource management plans; habitat restoration; and mitigation planning and design. Our experience includes comprehensive evaluations of biotic communities as well as more habitat-specific studies relating to wetland and non-wetland habitats, forest fragmentation, and specific fish and wildlife habitat requirements.

Air Quality - Source and receptor identification; emissions inventories; mesoscale (regional) analysis; microscale (local) analysis; impact analysis; and mitigation planning. For vehicular traffic impacts, we utilize the most current modeling software CAL3QHC and MOBILE6.

Noise – Source and receptor identification; monitoring; modeling; impact analysis; and mitigation planning. We have experience using both the Federal Highway Administration's Traffic Noise Model (TNM) and the Federal Transit Administration's General Noise Assessment Spreadsheet (FTANOISE) model.

Traffic, Parking, Bicycle, and Pedestrian Considerations – Traffic engineering and operations analysis; parking surveys; demand estimation; signal evaluation; transportation modeling; bicycle and pedestrian planning; impact analysis; and mitigation planning and design.

Land Use and Consistency with Other Plans – Determination of consistency with state, regional, and local plans of conservation and development; access management; congestion management; zoning compatibility; land capability analysis; community cohesion; impact analysis; and mitigation planning.

(Continued)

Socioeconomics and Environmental Justice – Demographic data analysis; residential and business displacements; economic impact evaluation; relocation planning; identification of minority and low-income populations and evaluation of impacts on these populations; community outreach and coordination; and mitigation planning.

Historic and Archeological Resources – Inventories and surveys; fieldwork and photo documentation; archival research; preservation planning; Section 106 review; agency coordination; and mitigation planning including memorandums of agreement.

Section 4(f) Resources – Resource identification; use determination; alternatives evaluation; impact assessment; and mitigation planning. FHI has prepared programmatic as well as stand-alone Section 4(f) Evaluations for numerous types of transportation projects.

Section 6(f) Resources - Identification of recreational properties that were either funded and/or improved with Land and Water Conservation Act Funds; impact analysis; and mitigation planning.

Coastal Resources – Resource identification; determination of consistency with coastal resource and use policies; impact analysis; and mitigation planning.

Visual Resources – Visual and aesthetic resource identification; impact analyses; and mitigation planning. Methods include accepted descriptive qualitative methods as well as GIS-based analysis applications.

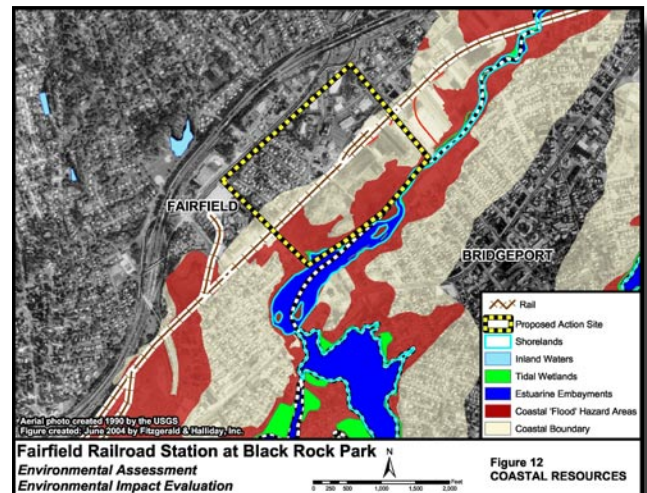
Hazardous Materials – Phase 1 Corridor Land Use Evaluations; database, map and historic land use research; site reconnaissance; impact analysis; and mitigation planning. FHI is thoroughly familiar with regulatory requirements on both federal and state levels, including Superfund, CERCLA, RCRA, ERNS, and OSHA programs.

Construction Impacts – Identification of construction equipment, methods, and phasing; impact analysis; and identification of best management practices.

Secondary and Cumulative Impacts – FHI takes a “big picture” view of each project in order to assess indirect, or secondary, impacts as well as a project’s overall incremental effect on the environment when considered in the context of past, present or future activities.

Special Associated Technical Studies

Our environmental planners and cultural resource specialists also excel at specialized evaluations that may be required for project implementation, such as Section 106 historic documentation, Section 4(f) evaluations, and Section 7 Biological Assessments.



Representative NEPA Projects

- New Haven Harbor Crossing EIS, CT
- Hampton Roads Crossing Study EIS, VA
- Route 6 Final EIS, CT
- Route 34 (Stevenson Dam) Bridge over the Housatonic River EA and Section 4(f) Evaluation, CT
- Route 15 (Sikorsky) Bridge over the Housatonic River EA and Section 4(f) Evaluation, CT
- T.F. Green Airport Master Plan and EIS, RI
- Easton Municipal Airport Obstruction Removal EA, MD
- Groton-New London Airport Runway Safety Area Improvements EIS, CT
- Dulles Corridor Rapid Transit Project EIS, MD
- Philadelphia International Airport Master Plan Update and EIS, PA
- Sikorsky Memorial Airport Safety Improvements EIS, CT
- Waterbury-Oxford Airport Master Plan and EA, CT
- Rutland Railyard Relocation EIS, VT
- Route 2/2a/32 DEIS, CT
- New Britain-Hartford Busway EIS, CT
- Ferrell Parkway Corridor Study/DEIS, VA
- Aroostook County Transportation Improvements DEIS, MA
- Route 25 Widening DEIS and Section 4(f) Evaluation, CT
- Route 7 Improvements EA, CT
- Petersburg Multimodal Transportation Center EA, VA
- Burlington Downtown Transit Center EA, VT
- Binghamton Intermodal Transit Terminal EA, NY
- Bridgeport Intermodal Transportation Center EA, CT
- Fairfield Railroad Station at Black Rock Park EA, CT
- Stamford Bus Maintenance Facility EA, CT
- I-95 Interchange 33 EA, CT
- West Haven/Orange Commuter Rail Station EA, CT
- MAGLEV Program Environmental Oversight, Multiple States
- On-Call Environmental Consulting Services, VTrans
- On-Call Environmental Planning, CT Dept. of Public Works
- On-Call Preparation of Environmental Documents, CT Department of Transportation
- On-Call Environmental Services, Maryland State Highway
- On-Call Environmental Documentation, CT Department of Administrative Services