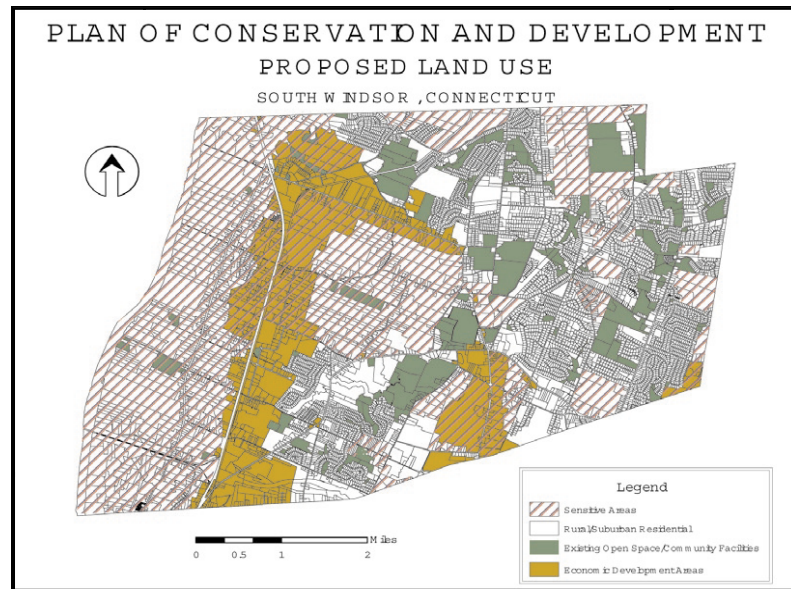


South Windsor Plan of Development

South Windsor, Connecticut



Description

As part of a multidisciplinary project team, FHI provided planning services to the Town of South Windsor for update of the town's comprehensive plan of development. FHI's role was preparation of the traffic and transportation element of the comprehensive plan and mapping services.

Transportation issues are of prime concern in this community due to the rapid increase in commercial development along several of the town's travel corridors and the corresponding increase in traffic and congestion. All transportation issues were considered including those relating to alternative modes of transportation.

Through the use of GIS, FHI is developed a catalog of maps to evaluate future development potential for the town. Included within the map catalog is information related to natural resources, traffic zoning, utilities, and land use. FHI is also creating a development opportunities map using ESRI ArcView GIS software and ESRI Spatial Analyst 2.0. FHI is overlaying existing land use, zoning, environmental constraints, and road networks to identify parcels and land Areas where future development is possible and may occur. The results of the analysis will be utilized by the town to modify existing zoning regulations, identify potential open space acquisition, and plan infrastructure

Client

Town of South Windsor, Connecticut

