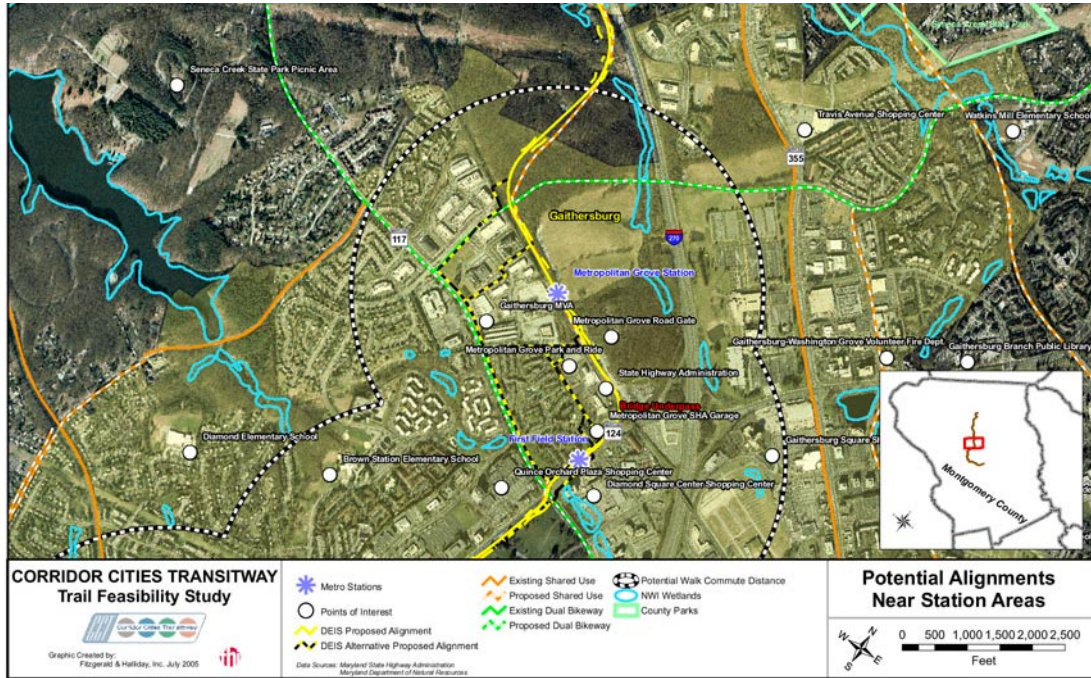


I-270 Multi-Modal Corridor Study Maryland



Description

Fitzgerald & Halliday was contracted as part of an on-call contract with the Maryland Transit Administration to determine the feasibility for constructing a multi-use trail in the vicinity of a planned transit alignment in Montgomery County, Maryland. Tasks have included coordination with local planning agencies, mapping of environmental constraints, and assessment of potential on-road alternatives in areas where right of way concerns were most pertinent. Recommendations are expected to include expected funding levels for various alternative alignments.

Client

Maryland State Highway Administration

